

## Browning's Academic Journey Comes Full Circle

Born in Texas, Evelyn Browning's family moved to Hampshire, England when she was two years old. She returned to the U.S. at the age of 12 and is now a senior at UW–Madison in the College of Agricultural and Life Sciences. Browning will return to the UK this fall to attend the PhD in Biological Science program at the Wellcome Sanger Institute outside Cambridge. She was one of 43 Americans to receive the prestigious Marshall Scholarship which seeks to strengthen relationships between the United Kingdom and the United States through academic exchange and collaboration.

In addition to the Marshall Scholarship, Browning received a \$1,000 Pioneer Award from The Honor Society of Phi Kappa Phi, the nation's oldest and most selective collegiate honor society, and the William F. Vilas Scholarship. Browning is a former WALSAA Outstanding Sophomore Award scholarship winner and serves as a member of WALSAA's Marketing and Alumni Engagement committee.

A double major in genetics and genomics and data science, Browning made the most of her time at UW–Madison, both inside and outside the classroom. She began working in genetics laboratories during her freshman year. She co-authored a study published in *BioTechniques* with emeritus professor of genetics and chemistry David C. Schwartz and members of his lab. She now conducts research in the lab of Professor Steven Schrodi, investigating the epigenetics of familial epilepsy, the basis of her honors thesis. Her research has been supported by a Hilldale Undergraduate/Faculty Research Fellowship, UW–Madison's most prestigious fellowship for undergraduate scientists. Her ambition is to uncover the underlying genetic risk factors for rare neurodevelopmental disorders and harness them for better diagnoses and treatments.

As academic chair of the Undergraduate Genetics Association, Browning helped fellow students identify research and scholarship opportunities. She also served as the former president of the university's Shorin-Ryu Karate Club and as a sport club student lead for University Recreation and Wellbeing, overseeing six student-run sport clubs. She enjoys sharing her love of martial arts as a volunteer at a local YMCA's Okinawan Karate class and can be found most Fridays participating in on-campus swing dances.

In 2025, she worked on an independent project aimed at detecting new cancer biomarkers at Exact Sciences, a Madison-based company specializing in earlier cancer detection and treatment. Browning graduates in May with a Bachelor of Science completing the Honors in Research program and the Biology Core Curriculum Honors Certificate.

Heather Mialik, CALS Honors Program Manager, said, "Evelyn exudes dedication and passion for her pursuits. She is hard-working, inquisitive, and a true difference-maker. Her resourcefulness as an undergraduate student – sleuthing for what is available in terms of funding, research opportunities, program participation – is inspiring. She has been an exemplary member of the CALS Honors Program challenging and supporting her peers simultaneously."

"Students like Evelyn redefine what's possible," said Jane Hillstrom, WALSAA President. "We can't wait to see the impact she'll make as her star continues to rise."



*Evelyn Browning*



### IN MEMORIAM

Arthur Meinholz, FISC '82

Max Prange, FISC '10

Dean Walker, B.S. '57

### CONTACT US

Wisconsin Agricultural and Life Sciences Alumni Association

PO Box 5177

Madison, WI 53705-5177

P: 608.438.1994 E: [admin@walsaa.org](mailto:admin@walsaa.org)

# PRESIDENT'S MESSAGE

## Change Is Inevitable



*Jane Hillstrom, WALSAA President*

During my career at a marketing agency, all team members were required to read *Disruption* by Jean-Marie Dru. While the book focused on marketing, its core idea — embracing new thinking to lead change rather than react to it — stayed with me. That concept has come to mind often as WALSAA navigates new systems, events, and evolving ways to serve the College, CALS faculty, students, and alumni.

One area experiencing change is our scholarship program. For many years, dedicated alumni have selected and interviewed hundreds of students for the Outstanding Sophomore and Senior Impact Awards, made possible by your generous support. Due to federal guidelines, all UW scholarships will now be part of the Pool & Match program to eliminate bias. WALSAA will continue to honor students with these scholarships. The Student Engagement Committee is planning an event to celebrate this year's recipients.

Change is also shaping our events. Many of us still reminisce about the years WALSAA held Fire-Up in the Stock Pavilion. Hundreds of alumni came to hear Bob Kaufmann's band play — we ate, told stories, and raised money for scholarships. In recent years, Fire-Up moved to the Wisconsin Foundation and Alumni Association parking lot due to food safety requirements, but that space is no longer available. Our Events Committee has selected a new home for Fire-Up: The Orpheum Theater on State Street.

For those who set up chairs and tables in pouring rain last fall, this will be a welcome change. The Orpheum offers a nostalgic venue, nearby parking, walkable access for students, and freedom from weather concerns. Best of all, our dedicated volunteers — who have essentially built and dismantled a restaurant for a day — will finally be able to enjoy the food, music, and game on the big screen. This will be our 50<sup>th</sup> Fire-Up Tailgate Party! We hope you'll join us on October 24<sup>th</sup> when the Badgers play USC at Camp Randall.

Finally, we are adjusting our newsletter content and student engagement efforts to reflect the growth of life sciences within CALS. Under the leadership of Rick Daluge, WALSAA grew with alumni members in traditional agriculture fields such as dairy and poultry science. Today, more than 70% of CALS students are life sciences majors, such as genetics and biochemistry, which reflects today's needs for agriculture plus careers in health. In response, we have welcomed two new life sciences representatives to the WALSAA Board and plan to host a student focus group to better understand how we can support this growing community.

This year of disruption requires the board to think differently on how to make an impact for the College, faculty, students and alumni. We're up for the challenge. We hope you'll join us in leading change to carry WALSAA into the next 50 years.

On Wisconsin!

## WALSAA BOARD OF DIRECTORS 2025-2026

**Jane Hillstrom '80 - 2028**  
President  
Dodgeville, Wis.

**Brian Koch '90 - 2027**  
Vice-President  
Waupun, Wis.

**June Roush '87 - 2026**  
Past President  
Middleton, Wis.

**John Brunnuell '85, '95 - 2028**  
Treasurer  
Port Washington, Wis.

**Aaron Hoskins**  
CALs Faculty Rep/Ex-Officio  
Madison, Wis.

**Curt Lauderdale**  
CALs Rep/Ex-Officio  
Madison, Wis.

**CALs Ambassadors Student Rep**  
Megan Reimann

**CALs Student Reps**  
Amanda Bender  
Derek Gehin

**Mark Dopp '79 - 2028**  
Augusta, Ga.

**Derviş Gürsoy '19 - 2028**  
Madison, Wis.

**Jenny Loeb '01, '13 - 2028**  
Madison, Wis.

**Julie McKiernan '87 - 2027**  
Dane, Wis.

**Paul Mitchell '92 - 2026**  
Madison, Wis.

**Michael Murphy '87 - 2026**  
DeWitt, Iowa

**Cyndi Pitzner '90 - 2028**  
Jefferson, Wis.

**Tracy Propst '91 - 2027**  
Beaver Dam, Wis.

**Lindsey Sarbacker '21 - 2026**  
Appleton, Wis.

**Wynnie Zuchowski '92 - 2028**  
Wales, Wis.

**Rachel Zwieg FISC '08 - 2027**  
Ixonla, Wis.

*Interested in joining the WALSAA Board or becoming a committee member?*

Reach out to any of our current board members or contact Stephanie at: [admin@walsaa.org](mailto:admin@walsaa.org) or 608.438.1994.

# 50TH WALSAA FOOTBALL FIRE-UP - SAVE THE DATE

**WHEN:** Saturday, October 24

2 hours before kick-off of the UW Badgers vs. USC Trojans game

**WHERE:** \*NEW LOCATION\* The Orpheum, 216 State St, Madison

**WHAT:** Fire-Up will have a new look and a new feel as we celebrate the 50th WALSAA Football Fire-Up and look forward to the next 50 years of WALSAA. We invite you to attend the celebration at The Orpheum in Madison. Plans include a pre-game tailgate, entertainment from The Jimmys, award presentations, viewing party, silent auction, raffles, and more!

COMING SOON!  
50TH WALSAA FOOTBALL FIRE-UP  
FEATURING THE JIMMYS  
SATURDAY, OCTOBER 24, 2026

Interested in sponsoring  
or donating?  
Contact [admin@walsaa.org](mailto:admin@walsaa.org)  
Learn more at [WALSAA.org](http://WALSAA.org)



# CALS MESSAGE



## Supporting our Graduate Students

In time of unprecedented cuts in federal support for universities, the CALS Fund can be a lifeline for graduate students. We're educating about 500 graduate students supported by federal grants at any given time, but their assistantships in labs and classrooms rely on federal dollars. The CALS Fund is a flexible pool of private resources designed to help the college quickly adapt and respond to emerging needs like this one. And it only exists thanks to generous gifts, large and small, from our supporters.

Read more at [grow.cals.wisc.edu](http://grow.cals.wisc.edu)

## How to Pull Away from the Pack with Panache

The UW Badger Pulling Team uses ingenuity, skill, and style to make its tractor design stand out at an international competition. The competition pushes students to apply classroom knowledge to practical, real-world engineering challenges.

Read more at [grow.cals.wisc.edu](http://grow.cals.wisc.edu)



## Winter Graduate Spotlights

Congratulations to our Winter 2025 graduates! Meet some of our our newest CALS alumni at [cals.wisc.edu/recent-alumni](http://cals.wisc.edu/recent-alumni)



**Nathan Sorensen**

*Biological Systems Engineering*



**Maryann Gudenkauf**

*Dairy Science*



**Lucy Wersinger**

*Microbiology*



**Pranav Karra**

*Biology*

## Advocate for UW-Madison

We need alumni like you to speak up about issues that affect our students and faculty. Find out how you can support the UW.

[uwalumni.com/advocate](http://uwalumni.com/advocate)

# STUDENT IMPACT GRANT FEATURE

## Intercollegiate Dairy Cattle Judging Team

Since the University's inception in 1948, UW–Madison has provided intercollegiate dairy judging. The UW–Madison Intercollegiate Dairy Cattle Judging Team consists of students that have varying backgrounds and experience in dairy cattle judging. Students earn academic credit for their involvement and are eligible to compete starting in their sophomore year in accordance with American Dairy Science Association guidelines.

The dairy judging team competes in the fall and winter at six different contests across the country. In January 2026, they won the Fort Worth Stock Show Intercollegiate Dairy Cattle Judging competition in Texas. Team members included Jenna Gries, Clarissa Ulness, Lauren Breunig, and Sara Kronberg. Jenna Gries also secured 1st place overall individual. The team is coached by Brian Kelroy, a UW–Madison alumnus, and Trent Olson.



*L-R: Lauren Breunig, Jenna Gries, Sara Kronberg, Clarissa Ulness, and Brian Kelroy, coach*

There are many benefits to be gained by getting involved in this activity. To start with, team members have the opportunity to visit many of the best farms in southern and central Wisconsin. Another advantage is being a part of the fun and camaraderie of the team. And possibly most important, it is the life skills that this activity develops. According to employers who recruit at the UW, students who take part in dairy cattle judging become better decision-makers, better problem solvers, and better communicators.

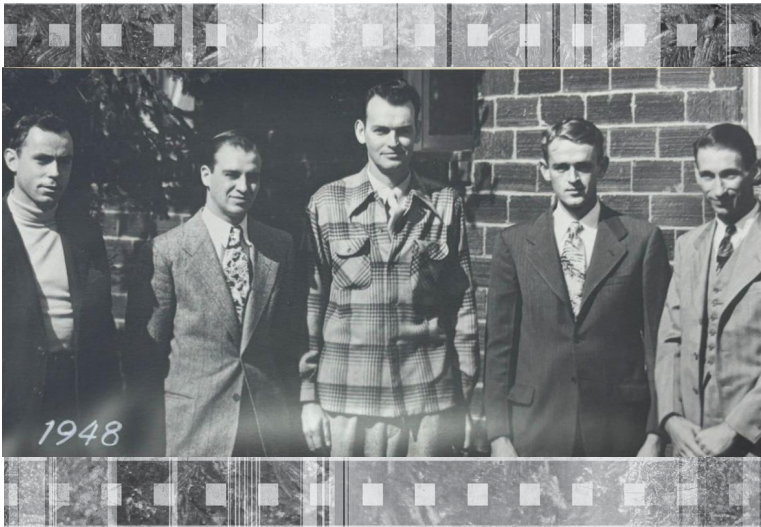
*More information about Student Impact Grants*

@WALSAA.org/students/impact-grants/



## WALSAA BACK WHEN

### A Look Back at 1948 and 1989



*1948 Dairy Judging Team*

*L-R: Joseph Darcey, Marlowe Nelson, Olin T. Fosgate, Frank Coburn, and C.E. Zehner, coach*



*Alice in Dairyland at the 14<sup>th</sup> WALSAA Football Fire-Up Held at the UW Stock Pavillion in 1989*

*L-R: Howard Roth, Stephanie (Roth) Binversie, and Karen Roth*

# A Sincere *Thank You* to our 2025 Donors

## **VARSDITY**

**(\$1,500 or greater)**

John and Cathy Brunnquell  
Compeer Financial  
Rick and Peggy Daluge/  
Daluge Travel  
Vern and Judy Dougherty  
Liz and Joe Henry/J. Henry & Sons  
Kay and Duane Maas  
Malibu Pools/Tom Carey  
Carol Philipps  
Andy and Tracy Propst/  
Propst Farm  
In Memory of David R. Selner  
UW-Foundation  
Jimmy Voegeli/The Jimmys  
William Thomas Jewelers  
The Wilson Family

## **BADGER**

**(\$750-\$1,499)**

American Foods Group  
Michael and Joyce Marr/  
Valley View Farms LLC  
Rodney Gasch  
Al and Lynn Herrman  
Jane Hillstrom and  
Mark Breseman  
Tom and Bev Kennedy  
Jim and JoAnn Lawler  
James Mode  
Gary and Teresa Sommers/  
Meadowdale Farm, Inc.

## **BABCOCK HALL**

**(\$500-\$749)**

Brakebush  
Coloma Farms/  
Andy and Crystal Diercks  
Dave and Kim Daniels  
Taylor Fritsch and Emily Selner  
Dervis Gursoy/Spraycision  
Bob and Lisa Hagenow  
Mark & Deborah Hansen  
Jack and Jane Kaltenberg/  
Partners In Production Seeds  
Allen Kohn  
LakeShore Equine Services/

Andrea McGowan, DVM  
Julie and Kevin Larson  
Stanley McGraw  
Gerald Meixelsperger/  
Meixelsperger Farms  
Paul and Sarah Patterson  
Gary Premo  
June Roush  
Sanimax  
Julie Wendler

## **HENRY MALL**

**(\$250-\$499)**

Alpha Gamma Rho Iota Alumni  
Bailey's Run Winery & Vineyard  
Lawrence Behlen  
Robert Behnke  
BMO Harris  
Jeff and Mary Bradley  
Arthur Carter  
Case IH Racine Experience Center  
Shawn and Lori Conley  
David and Cindy Cooper  
Robert and Janice Cooney  
William and Jean Ehrke  
Pat and Amy Galloway  
Mike Garvey  
Cliff Gnatzig/Gnatzig Farms, LLC  
Joel and Stephanie Hammerly/  
Dreamstone Dairy  
Thomas Kriegl

Joel P. and Marion-Kaye Marquardt  
John R. McClellan  
Julie McKiernan  
Robert H. Miller, Ph.D.  
Samuel and Nadine Miller  
Sand Cassell Farms/  
Jerry and Nancy Kaufman  
Mary Jo Schieldt  
Larry and Dona Turner  
Russell and Dae Jean Vogel

## **RED**

**(\$125-\$249)**

Jon and Rachel Anderson  
Michelle Brenner  
Martin Burkhardt  
Gerald Campbell

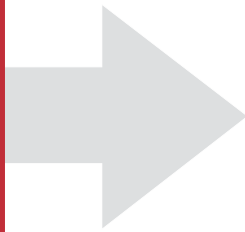
Wayne P. Craig  
Anne-Marie Crowley  
Dirty Dog Taphaus  
Doctors Choice Supplements/  
Jon and Jennifer Sawle  
Hook's Cheese Chompany, Inc.  
Martha (Pederson) Huser and  
Pete Huser  
Randy and Linda Jones  
Brian Koch/Red Barn Advisors  
John L. and Nancy Brown-Koeller  
Bliss Nicholson  
Valerie and Jeff Renk  
Edward and Lorilea Reible  
Russell Rindsig  
Rollie Schmidt  
Thomas Skatrud, Ph.D.  
Mark P. Strohschein  
Joan Stuessy  
Millard and Barbara Susman  
Mark Thieleke  
Tietz Family Farms Popcorn/  
Rusty Tietz  
Larry and Dona Turner  
UW-Madison CALS  
Carla Voss  
John W. Wilks  
The Williams Family  
Kyle and Rachel Zwieg/  
Zwieg's Maple Acres

## **WHITE**

**(Less than \$125)**

Thomas and Mary Albrecht  
Tammy Beard  
Dian Biehn  
Stephanie and Randall Binversie  
Derek Brander  
Veronica Braum  
Nicole Breunig  
Daniel Butterbrodt  
Larry Callin  
Kris Cook/Seasonal Porch Co.  
Andrew and Mary Currie  
Dirk Daniels  
Dodi David  
Maureen DeBruin  
John and Cynde Dornuf  
Mike Garvey

Oren and Patty Hammes  
In Memory of Bob Hanson  
Dale Hesselink  
Emmett Hying  
James Lawler  
Nicole Lederich  
Jennifer Loeb  
Gregory Long  
Brad Markhardt  
Sue Miller  
Paul Mitchell  
Michael Murphy  
Bob Panzer  
Dave and Dawn Patterson  
Mike Pedersen  
Dale and Jacquelyn Pertzborn  
Cyndi Pitzner  
Richard E. Ralph  
Robert T. and Patricia J. Reddell  
Doug Reinemann  
Neal and Joan Sanders  
Lindsey Sarbacker  
Dan and Gail Schaefer  
Sheldon Schieldt  
Roger Shanks  
George Shook  
Dale M. Sievert  
Richard Straub  
Jim Strickland  
David Stute  
Bill and Diane Thompson  
Usinger's  
Glenn and Heidi Vande Walle  
Varsity Meats  
Donald Walther  
Gregg Weaver  
Anne Weiss  
James and Julie Wendler  
Michael Wilkinson  
Wisconsin Potato & Vegetable  
Growers Association  
Daniel Ziegler  
Scott Zimmerman



## Sponsorship Opportunities

Sponsorships offer exposure to and networking with UW-Madison's College of Agricultural and Life Sciences (CAL S) students, faculty, staff, alumni and industry enthusiasts. Your sponsorship offers you industry visibility and helps WALSAA support programs and activities that prepare the next generation for leadership. In return, you receive our newsletters, inclusion on our website and promotion on our social media channels, plus an invitation to and recognition at our events.



[WWW.WALSAA.ORG](http://WWW.WALSAA.ORG)

## Sponsorship Levels

- LEGACY** Investment \$5,000 and above  
Sponsor logo on WALSAA.org and event signage, company mention in news releases, in the print and digital WALSAA Connection newsletter and on social media along with additional recognition at the event including indoor and outdoor signage. Includes ten event tickets, social media spotlight, along with a table at the Fire-Up event.
- AMBASSADOR** Investment \$2,500-\$4,999  
Sponsor logo on WALSAA.org and event signage, company mention in news releases, in the print and digital WALSAA Connection newsletter and on social media along with additional recognition at the event. Includes six event tickets, social media spotlight, and a table at the event.
- VARSITY** Investment \$1,500-\$2,499  
Sponsor logo on WALSAA.org and event signage, company mention in news releases, in the print and digital WALSAA Connection newsletter and on social media along with additional recognition at the event. Includes six event tickets.
- BADGER** Investment \$750-\$1,499  
Sponsor logo on WALSAA.org and on event signage, company mention in news releases, in the WALSAA Connection newsletter and on social media along with additional recognition at the event. Includes four event tickets.
- BABCOCK HALL** Investment \$500-\$749  
Sponsor logo on event signage, in the WALSAA Connection newsletter and on social media along with additional recognition at the event. Includes two event tickets.
- HENRY MALL** Investment \$250-\$499  
Sponsor logo on program and signage, in the WALSAA Connection newsletters and on social media, plus recognition at the event.
- SILENT AUCTION CONTRIBUTION** Value: \_\_\_\_\_ Item Description: \_\_\_\_\_  
Sponsor a silent auction item of your choosing. We will auction off your item during a WALSAA event to raise money towards future scholarships.



Please fill out the information requested and send with payment to:  
WALSAA, PO Box 5177, Madison, WI 53705-5177. Contact 608-438-1994 or email [admin@walsaa.org](mailto:admin@walsaa.org) with questions.

Contact Name: \_\_\_\_\_

Company Name (if applicable): \_\_\_\_\_

Name of how to be recognized: \_\_\_\_\_

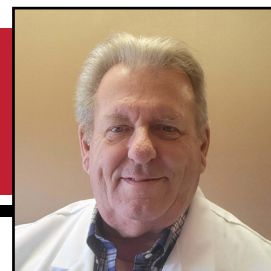
Address: \_\_\_\_\_

Phone: \_\_\_\_\_

Email: \_\_\_\_\_

# WALSAA MEMBER SPOTLIGHT

## Fred Freitag: A Life Shaped by Science, Service, and Connection



Fred Freitag holds fond memories of spinning records as a disc jockey at the Lakeshore Radio Station, serving as a Tripp House Fellow, and making late-night donut runs with friends. A CALS biochemistry major, he also suffered from chronic migraines. A pivotal visit to Health Services changed everything, setting him on a lifelong mission to help others suffering from headache disorders.

Fred completed his UW undergraduate degree in 1975 and attended medical school at Midwestern University Chicago College of Osteopathic Medicine. His medical training continued with an internship and residency at Brentwood Hospital, and a fellowship at the Cleveland Clinic Foundation. Today, Dr. Freitag is a Doctor of Osteopathic Medicine specializing in Neurology and Headache Medicine at SSM Health/Dean Medical Group in Madison, Wis.

He has served as the primary investigator on more than 200 clinical trials, published over 170 peer-reviewed articles, and holds advanced certifications in Headache Medicine from both the National Headache Foundation and the United Council of Neurological Subspecialties.



**Volunteering at Winter Carnival**

He believes his CALS degree gave him opportunities that may have been more difficult to find in other places. For example, Dave Nelson, Fred's advisor, recommended he take a dairy science course on the physical chemistry of dairy foods. The class, rooted in macro-structural chemistry, proved unexpectedly valuable and later informed his graduate-level research on serotonin receptor activity.

In four years, Fred completed 134 credits, of which 124 were math and science, including 12 at the graduate level...without summer school.

"I wasn't the brightest bulb in the chandelier. A touch point with a professor in microbiology revolutionized my experience to do well in school. I struggled with her section, so I met with her to find out why I wasn't catching on. She taught me how to use the innate, but hidden skills we all have to learn how to study."

Today, Fred sees about 15 patients a day, four days a week. He is also developing new tools to improve headache care for both pediatric and adult patients, while working closely with physician assistants who share his focus on this specialized field.

His connection to UW remains strong. Fred stays involved through WALSAA, volunteers at Winter Carnival, audits classes, and regularly attends history lectures and biochemistry seminars. He is also a dedicated supporter of Badger Women's Hockey, holding season tickets.

Reflecting on today's students, Fred observes an intensity he both admires and questions. "When I talk with today's biochemistry students, they have such a wide range of interests; usually pursuing two majors along with internships and certificates. I think it's good and bad. I understand why they are doing it — there's tougher competition for graduate programs and medical school. But does this intensity sacrifice the joys of going to college? I hope people in STEM see college as a time for personal growth, not only academic growth, because no matter where you go, you are going to be interacting with other people. If you don't develop the ability to have good conversations and share ideas as a student, it's more difficult to develop that skill as an adult."

---

**"I hope people in STEM see college as a time for personal growth, not only academic growth, because no matter where you go, you are going to be interacting with other people. If you don't develop the ability to have good conversations and share ideas as a student, it's more difficult to develop that skill as an adult."**

---

One of his favorite memories reflects that belief. "Even though the football team had losing seasons, we went to the games. One day, while sitting in my dorm room as a freshman, this big dude filled my entire doorway. It was Rufus Ferguson, a Badger running back, who was the first regular season 1,000 Yard Rusher and was drafted by the Atlanta Falcons. We had a good relationship. We could share jokes and serious reflections on being a student at Wisconsin."

Looking back, Fred believes it is the relationships—formed in classrooms, dorm rooms, and unexpected encounters—that give college its lasting meaning. And it is those same human connections that continue to guide his work today.

# WALSAA WELCOMES NEW BOARD MEMBERS

## Dopp, Hoskins, and Loeb Join WALSAA Board of Directors



**"The degree I received in agricultural economics from CALS served as the foundation for a 40+ year career practicing law in the food and agriculture sector. It helped provide skills I used working in food and agriculture policy, antitrust issues, and legislative matters."**

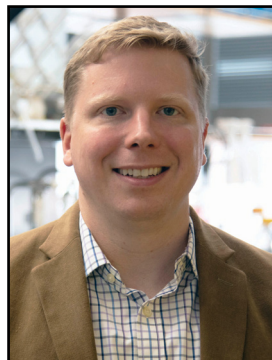
**-Mark Dopp**

### Mark Dopp

Mark Dopp retired from the Meat Institute, a Washington, DC based trade association representing the meat and poultry industry, in 2025. At the Meat Institute he was the chief operating officer and general counsel, previously serving as its senior vice president of regulatory affairs and general counsel. In that role, Dopp oversaw policy development and represented industry views on significant regulatory, scientific, legislative, and communications matters. He also provided legal counsel and oversaw its administration and financial matters. Dopp was inducted into the Meat Industry Hall of Fame in 2021. Dopp became the Meat Institute's outside general counsel in May 1995 and in 1999 he formally joined the Institute and assumed responsibility for its legal and regulatory affairs. Before joining the Meat Institute Dopp worked at Hogan and Hartson (now Hogan Lovells), where he was active in areas of food and agricultural law on behalf of many clients, including domestic and foreign corporations. He joined Hogan and Hartson in 1989 as an associate and in January 1993 became a partner. Dopp began his career in USDA's Office of the General Counsel in 1984 and entered private practice in 1985. Dopp received his Bachelor of Science-Agriculture degree in agricultural economics from the UW-Madison and his Master of Science from Michigan State University in 1981, also in agricultural economics. He received his law degree in 1984 from the University of Missouri.

### Aaron Hoskins

Aaron Hoskins grew up in rural Indiana and attended Purdue University and graduated with a degree in chemistry in 2000. After college, he attended graduate school at MIT and obtained a PhD in chemistry in 2006. Afterwards, I was a postdoctoral research fellow at Brandeis University and UMass Medical School before



joining the UW-Madison Department of Biochemistry in 2011. His laboratory studies RNA processing using single molecule biophysics techniques. In addition to research, Hoskins taught undergraduate biochemistry at UW-Madison for 14 years and serves as faculty advisor for the student chapter of the American Society of Biochemistry and Molecular Biology. In his spare time, he enjoys dinners with

his partner Tim, spending time with his pets, cooking, HIIT workouts, and vegetable gardening.

### Jenny Loeb

Jenny Loeb holds a BS in Biochemistry and MS in Biotechnology from UW-Madison. After earning her biochemistry degree, she spent the first 12 years of her career in various research and development roles with multiple institutions and companies. Loeb held positions conducting basic research at UW-Madison, research and product development for Thermo Fisher Scientific, and served as an assay developer for early drug discovery programs with Gilead. After experiencing a layoff and shifting interests into the business side of the life sciences and biotechnology industry, she returned to UW-Madison to earn her MS degree. Her career transitioned to marketing positions with Promega, New England Biolabs, and Fleet Feet. She has managed product portfolios, commercialized products and services into specific market segments, and developed strategic plans for long term business growth. Jenny is proud to be a two time Badger alumnus and enjoys mentoring, teaching, and working with current and future CALS Badgers to find their way and achieve their goals. She lives in Madison, Wis. with her rescue dog, Ziggy, and is an avid runner, hiker, biker, and walker. "CALS taught me to think critically, and never stop learning even when your experiment fails. Keep seeking answers and trying new things, small thoughtful tweaks or updates get you closer to finding a solution. This helped me to be successful while at the bench and open minded when I moved into a business position."



**Current Board Members**

@ WALSAA.org/board/



# DEPARTMENT SNAPSHOTS

## Recent News and Advances



READ MORE

### Agriculture and Applied Economics

#### Farmer-Led Initiatives Help Reduce Surface Water Pollution in Wisconsin

Whom do you ask when you want to fix a problem in your house? Colleagues and neighbors are probably high on the list. For farmers wishing to address local environmental problems, nearby peers are a similar community. In Wisconsin, an example are producer-led watershed (PLW) groups that focus on the leading cause of nutrient pollution in U.S. surface water: agricultural runoff, or water that carries excess nitrogen and phosphorus from fertilized cropland and livestock pastures into drainage areas known as watersheds.

### Animal and Dairy Science

#### Michel Wattiaux Receives USDA National Teaching Award

Michel A. Wattiaux (*left*), Professor in the Department of Animal and Dairy Sciences at the University of Wisconsin–Madison, has been named the recipient of the 2025 USDA Excellence in College and University Teaching in Food and Agricultural Sciences Award in the National category. This highly competitive award, administered by the U.S. Department of Agriculture since 1992, recognizes exceptional educators who have made sustained and significant contributions to student learning in food and agricultural sciences.



### Biochemistry

#### Brian Fox Steps Down as Chairman of the Department; Dr. Rick Amasino Takes Over

After ten and a half years, Brian Fox has stepped down as the Chair of the Department of Biochemistry. Fox shares, "This service has been the greatest honor of my life, and I am deeply appreciative of the support and encouragement I have received from colleagues and friends across the university." Professor Rick Amasino begins serving as Department Chair in January 2026. Rick has been a professor in the Department since 1985 and has served alongside me since 2020 as Vice Chair.



### Genetics

#### Dr. Chris Todd Hittinger receives Vilas Mid-career Investigator Award

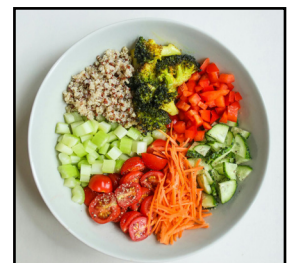
Hittinger, a professor in the Laboratory of Genetics and a leader in evolutionary genomics, is internationally recognized for his transformative work on yeast evolution, genetics, and biotechnology. His research program spans fundamental biological discovery, real-world applications in brewing and bioenergy, and innovative mentorship and training.



### Nutritional Sciences

#### Dietary Guidelines for Americans 2025-2030

The newest version of the Dietary Guidelines for Americans (DGAs), for 2025-2030, were recently released and garnered more media attention than previous releases. This was in part because the new DGAs were promoted as being a significant change from previous versions and better aligned with the goal of reducing chronic disease incidence.



### Plant and Agroecosystem Sciences

#### Irwin Goldman Selected as Wisconsin Potato and Vegetable Grower KWS Chair

Goldman has long served the plant science community at UW–Madison and growers across the Midwest. He also leads the Goldman Lab which specializes in beet, carrot, and onion breeding and genetics. "We are very proud to be part of the long history of vegetable breeding and genetics that began at UW in the 1950s," says Goldman.



# STUDENT UPDATES

## Meet the 2026 CALS Ambassadors

CALS Ambassadors are current CALS students who are eager to share about the CALS student experience. They connect with prospective first-year, transfer, and admitted students to help them learn about CALS and share their personal experiences as part of the CALS community.

**Name:** Bianca Alvarez  
**Hometown:** Palos Park, Ill.  
**Majors:** Microbiology and Chicana/x/e and Latinx/e Studies

**Why I chose UW–Madison:** I chose UW–Madison for the perfect student and social life balance. I am able to devote myself to my studies and make great relationships with people and create beautiful memories.

**Favorite part of being in CALS:** My favorite part of CALS is the connection! We are able to work together and this makes you feel that this huge university also has a perfect small tight knit community.

**Name:** Ellie Baudhuin  
**Hometown:** Rochester, Minn.  
**Major:** Genetics and Genomics  
**Certificates:** Health in the Humanities and Honors in Research  
**Why I chose UW–Madison:** The vibrant culture and scenic natural landscape initially drew me to Madison. I got excited as I continued to explore programs, learning about UW's status as an R1 research institution, and that it houses the first genetics department in the country. Stepping onto campus during my first tour, I truly felt like I could see myself at this renowned university.

**Favorite part of being in CALS:** The connection between peers, faculty, and alumni through their support of undergrads and the celebration of accomplishments. Coming from a high school graduating class of 70 students, I was nervous that I wouldn't find my place at such a big university. However, I can confidently say that CALS has given me, not just a place to belong, but a true home!



**CALS Ambassadors at Winter Commencement Celebration**  
**L-R: Nathan Buckley, Bianca Alvarez, Mackenzie Twomey, Patrick Colegrove**

**Name:** Nathan Buckley  
**Hometown:** Lakeville, Minn.  
**Major:** Biology and Life Sciences Communication  
**Why I chose UW–Madison:** I wanted a Big Ten college campus with all the research opportunities and athletics. However, the most important factor to me was the ability to create meaningful relationships with faculty and students in the small campus feel of CALS!

**Favorite class:** My favorite class has been LSC 251: Science, Media, and Society because I can now apply strategies to communicate science in my classes and extracurriculars.

**Name:** Patrick Colegrove  
**Hometown:** Chicago, Ill.  
**Major:** Biology  
**Certificates:** Science Communication and Biocore  
**Why I chose UW–Madison:** I was already drawn to UW–Madison as a hub of research and academics, but after visiting, I instantly felt the energetic and connected sense of community from the students, the campus, and the city itself.  
**Favorite part of CALS campus:** The Microbial Sciences Building is an amazing place to grab coffee to take to your classes, learn about on-campus microbio research, or just to study. I also love to take breaks with my friend and walk through Allen Centennial Garden when the weather is nice.

**Name:** Mackenzie Twomey  
**Hometown:** St. Louis, Mo.  
**Majors:** Microbiology and Global Health  
**Certificate:** Gender and Women's Studies  
**Why I chose UW–Madison:** I chose UW–Madison because whenever I asked a question, I was told no at other universities, but UW–Madison told me yes or we'll figure it out.  
**Favorite part of CALS campus:** My favorite part of the CALS campus is the BioCommons in Steenbock Library because it is a comfy place to relax and study with friends.

**Meet more CALS Ambassadors @** [cals.wisc.edu/academics/undergraduate/explore-cals/calsambassadors/](https://cals.wisc.edu/academics/undergraduate/explore-cals/calsambassadors/)





Your CALS Connection For Life

P.O. Box 5177, Madison, WI 53705-5177

NONPROFIT ORG  
U.S. POSTAGE  
PAID  
MADISON WI  
PERMIT NO. 549

Follow WALSAA on social media at:



[www.facebook.com/WALSAAUW](http://www.facebook.com/WALSAAUW)



[www.linkedin.com/company/WALSAA](http://www.linkedin.com/company/WALSAA)



[www.instagram.com/WALSAAUW](http://www.instagram.com/WALSAAUW)

[www.WALSAA.org](http://www.WALSAA.org)

# SAVE THE DATE



## Day of the Badger



April 14-15, 2026

Support the  
CALS Fund



# UPCOMING EVENTS

May 9 ♦ CALS Spring Commencement

October 24 ♦ WALSAA Annual Meeting &  
50<sup>th</sup> WALSAA Football Fire-Up  
The Orpheum, Madison

## Share Your Email With WALSAA



Have you not yet received the digital version of the WALSAA Connection e-newsletter? Scan the QR code and share your email with us to opt-in to the e-newsletter.